

# Vital Links from the North Sea to the Mediterranean

Interregional  
Alliance  
for the  
**Rhine-  
Alpine  
Corridor**  
EGTC

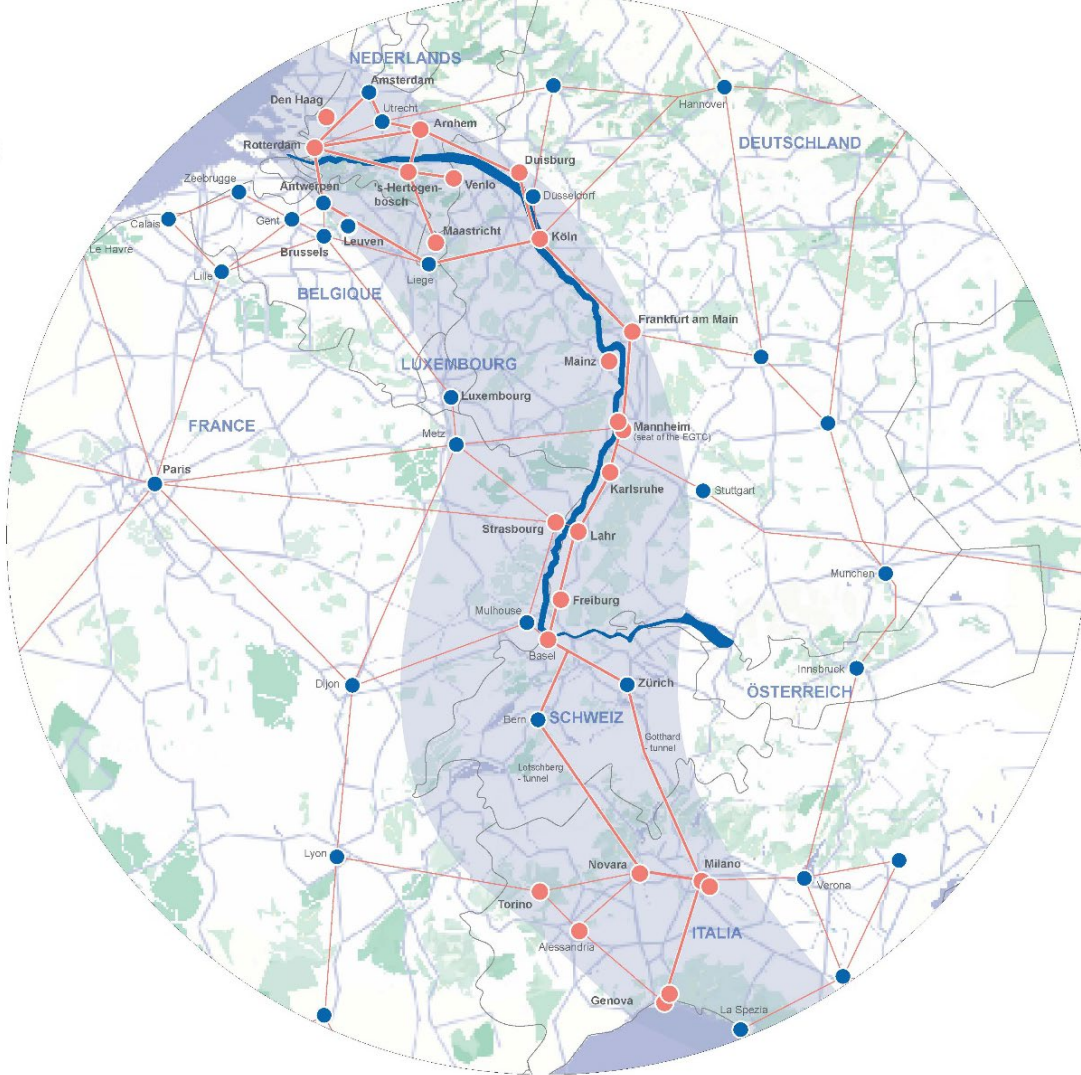
Thomas Ertel  
Projects and Communications Officer



Rhine-Alpine Talk 18, June 6<sup>th</sup> 11.00h

## Map Legend

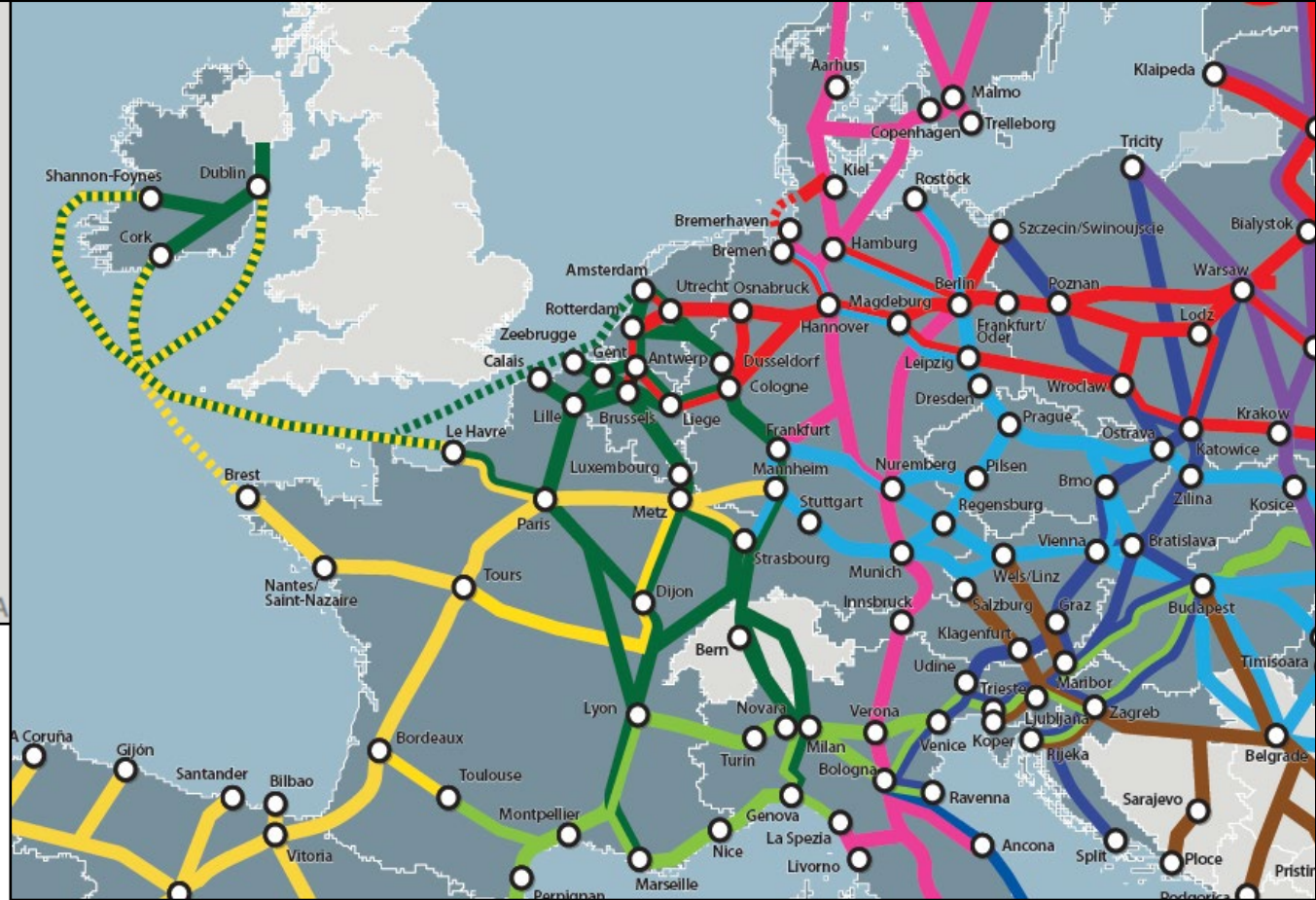
- Seat of Member Institutions
- Urban Nodes
- Rhine-Alpine Corridor
- Further Links



# THE HEARTBEAT OF A VITAL NETWORK STRATEGY



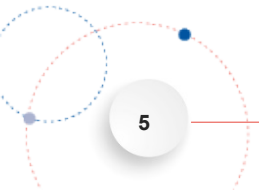
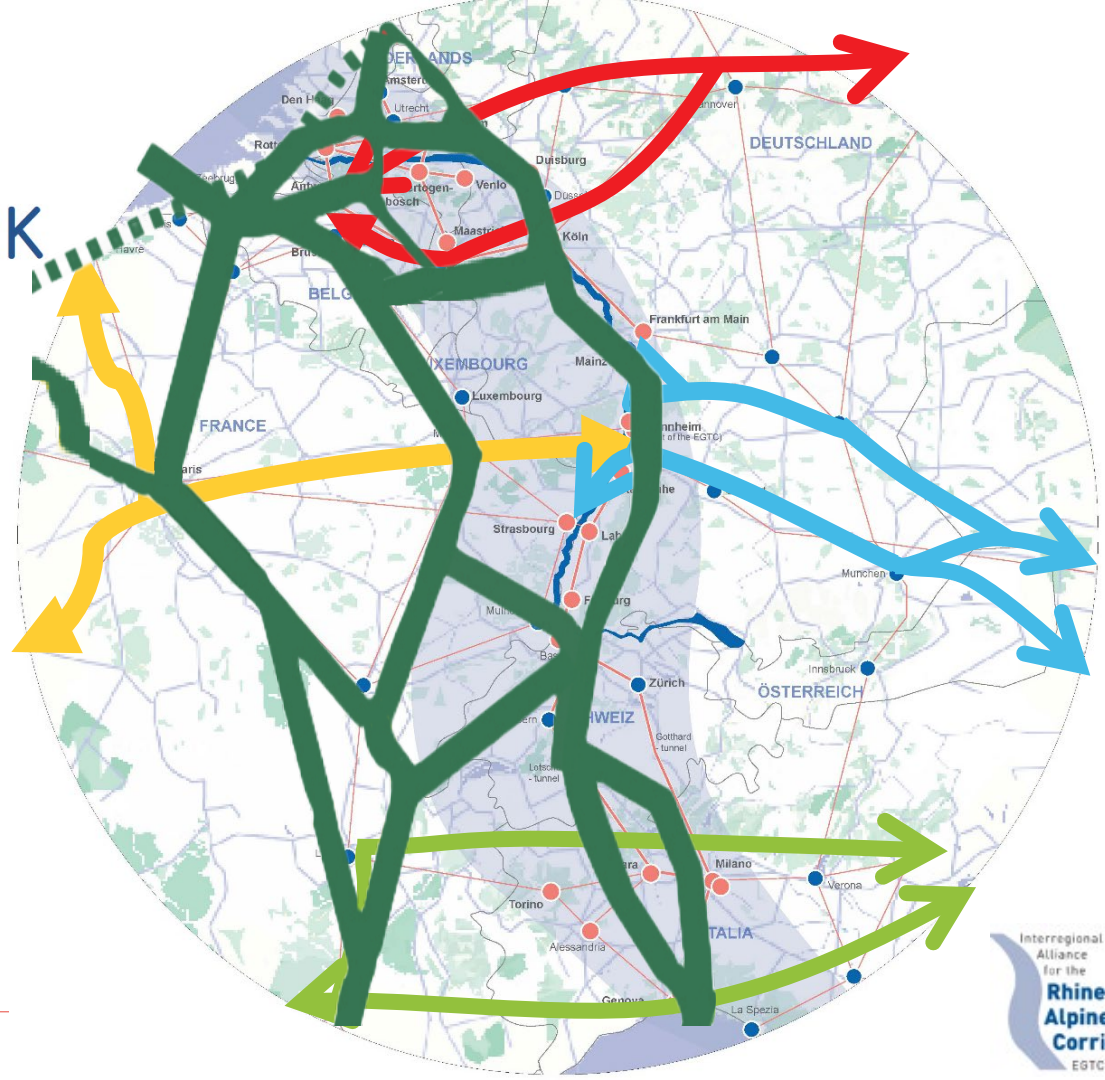
- ATLANTIC
- NORTH SEA – RHINE – MEDITERRANEAN
- NORTH SEA - BALTIC
- SCANDINAVIAN - MEDITERRANEAN
- BALTIC SEA - ADRIATIC SEA
- RHINE - DANUBE
- MEDITERRANEAN
- WESTERN BALKANS – EASTERN MEDITERRANEAN
- BALTIC SEA - BLACK SEA - AEGEAN SEA

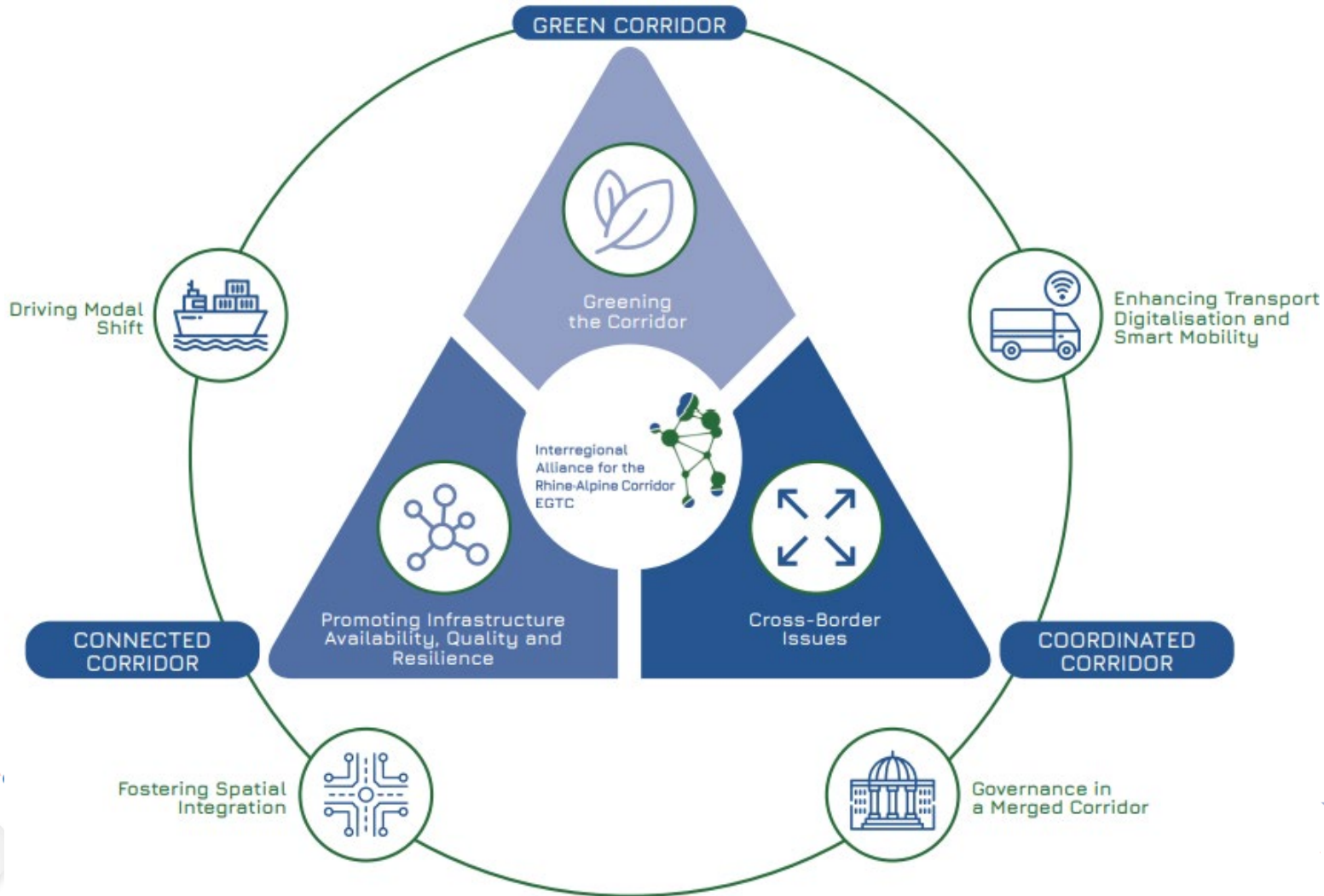


# THE HEARTBEAT OF A VITAL NETWORK

- ATLANTIC
- NORTH SEA - BAL TIC
- RHINE - DANUBE
- MEDITERRANEAN

NORTH SEA – RHINE –  
MEDITERRANEAN







## COORDINATED CORRIDOR



Governance in a Merged Corridor

- Planning and decision-making remain complex due to differing national regulations and standards.
- The NSRM Corridor's high cross-border traffic volumes and technical barriers require coordinated planning and development.
- Cross-border issues in transport, including capacity constraints and infrastructure bottlenecks, hinder efficiency.
- Improved infrastructure quality, harmonisation, and addressing language and cultural differences are necessary.

# Our vision for the North Sea – Rhine – Mediterranean Corridor

---



Interregional  
Alliance  
for the  
**Rhine-  
Alpine  
Corridor**  
EGTC



# Enhanced Planning and Governance for the North Sea-Rhine-Mediterranean Corridor – PREPARED”

- PREPARED is a targeted territorial analysis of the North Sea-Rhine-Mediterranean (NSRM) Corridor
- It will result in an evidence-based foundation for developing a common spatial and governance approach for the Corridor, potentially serving as a model for other trans-European transport corridors.
- Merve Cebeci and Stefano Pensa will give an overview of the methodological approach, multi-level data integration, and scenario modelling, while also discussing the participatory approach with stakeholders.

# Get in touch

**Dr. Thomas Ertel**

**Projects and Communications Officer**

Interregional Alliance for the Rhine-Alpine Corridor EGTC

c/o Verband Region Rhein-Neckar

M1, 4-5, 68161 Mannheim, Germany

Interregional  
Alliance  
for the

**Rhine-  
Alpine  
Corridor**

EGTC

Phone: +49 (0)-621 10708-235

E-Mail: [communication@egtc-rhine-alpine.eu](mailto:communication@egtc-rhine-alpine.eu)

Web: <http://egtc-rhine-alpine.eu>

