

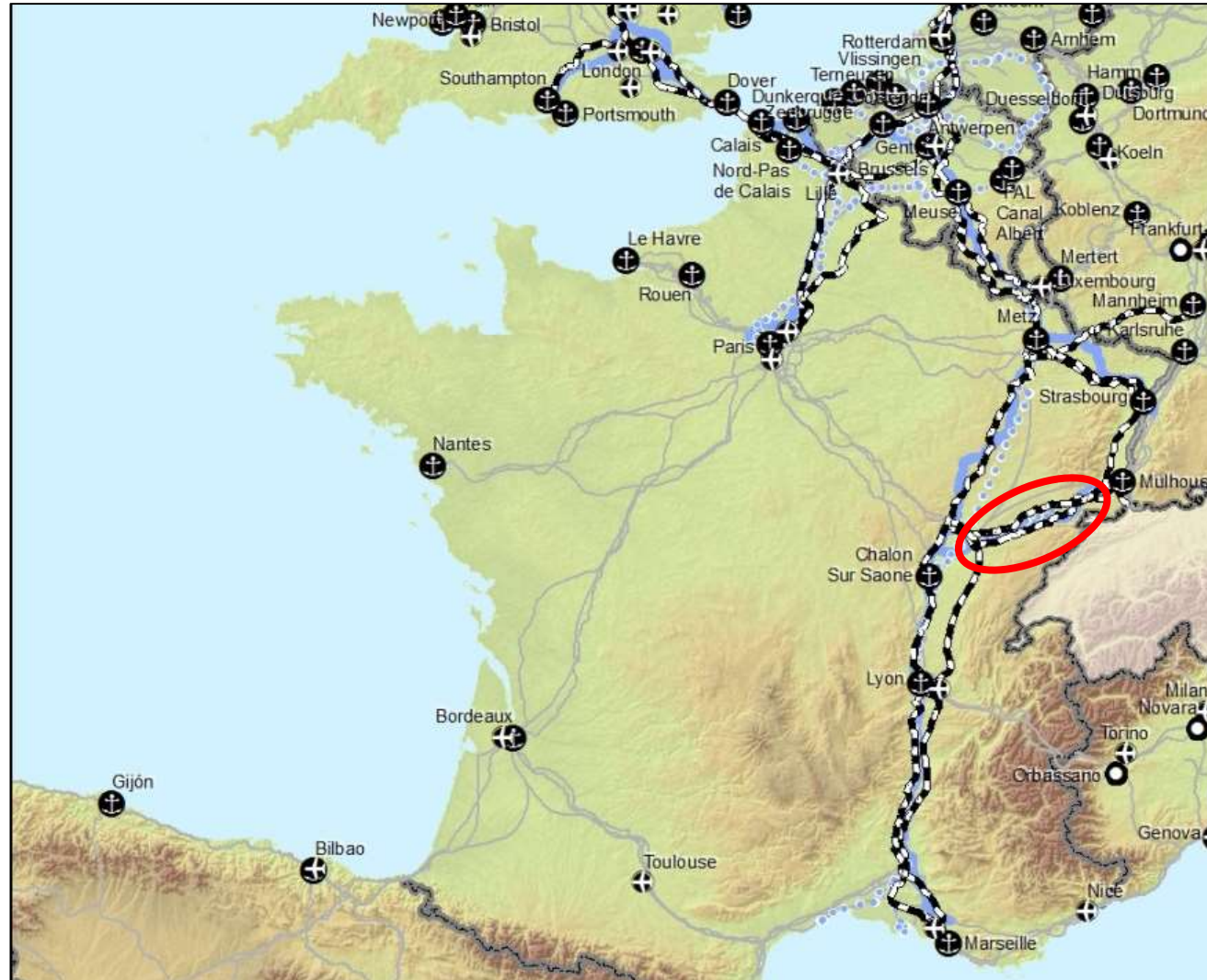
# NEW GOVERNANCE MODELS IN A MERGED CORRIDOR : THE CASE OF THE RHINE- RHÔNE HIGH-SPEED LINE

EGTC Rhin-Alpin corridor conference

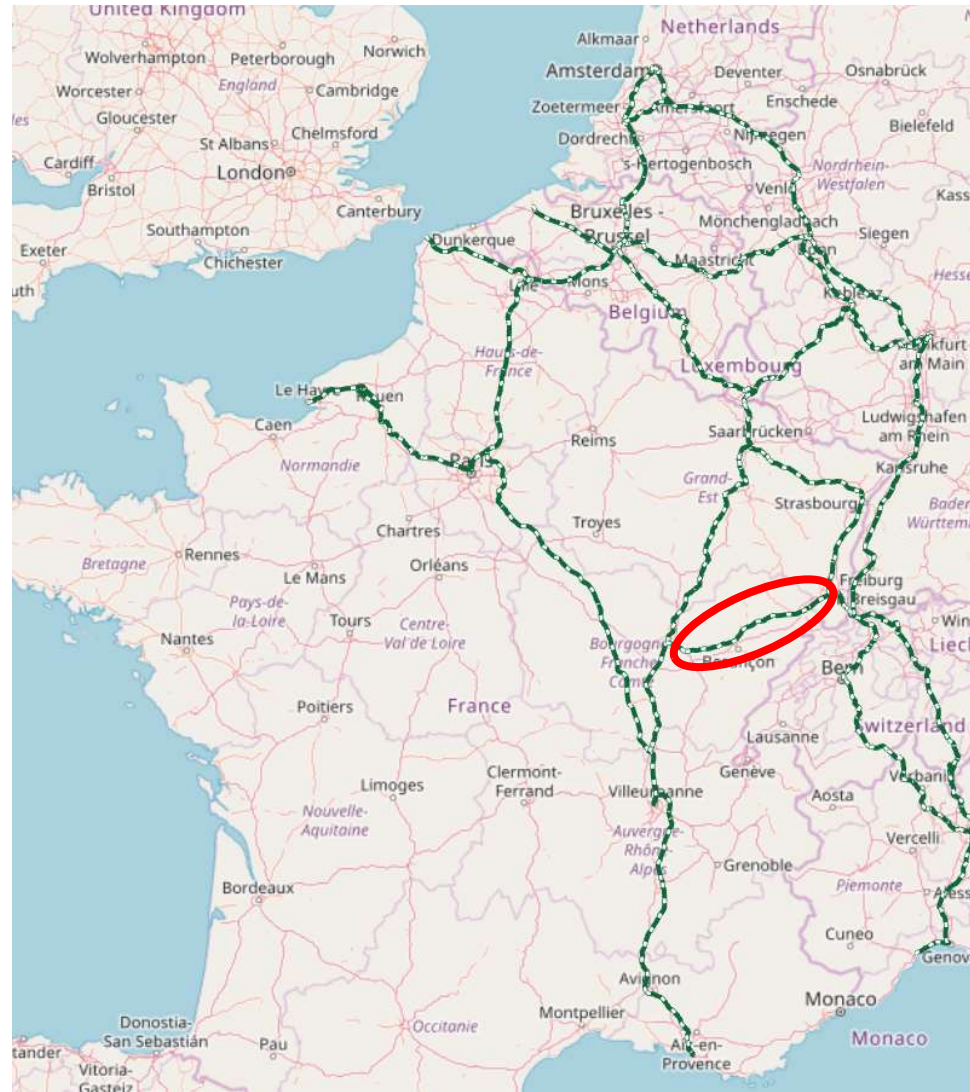
Strasbourg, 1 avril 2025



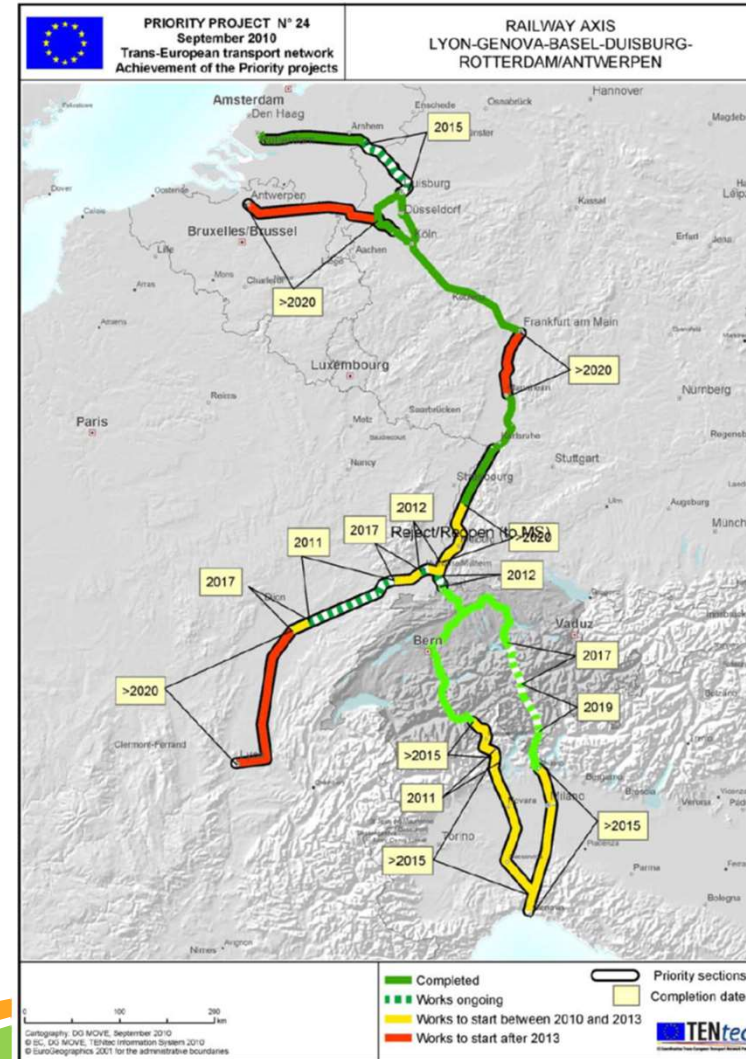
# FROM THE PERIPHERY OF THE NSMED CORRIDOR...



# TO A CENTRAL LINK IN THE NSRM CORRIDOR...

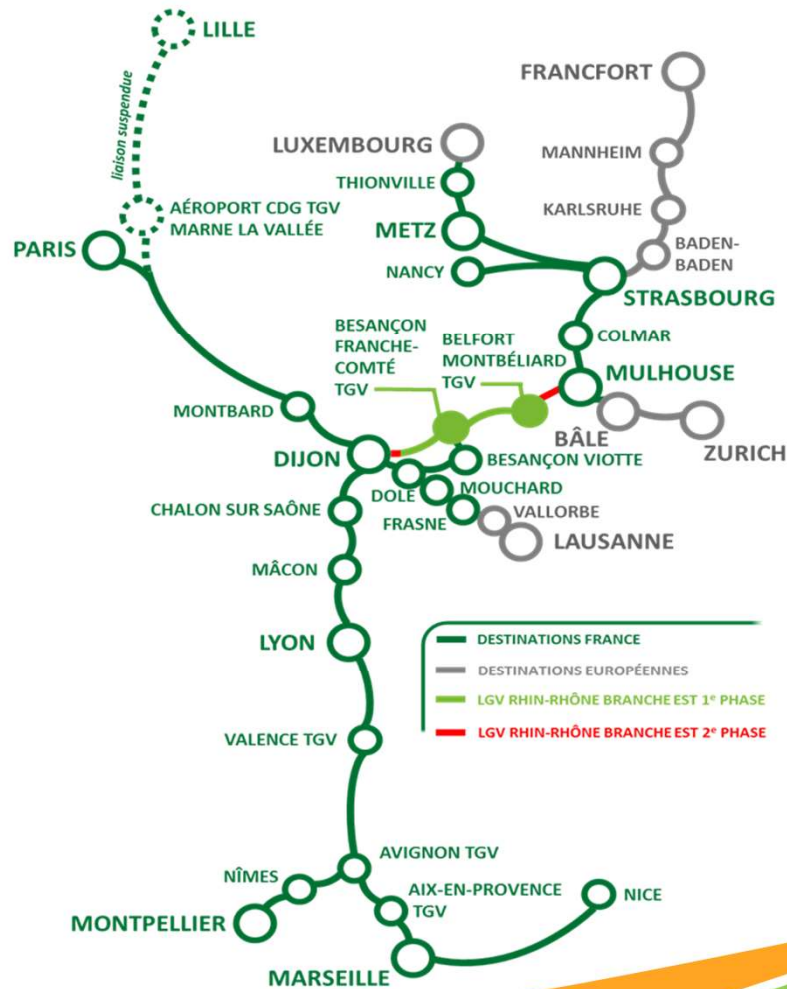


# RECONNECTING WITH FORMER PP24 PARTNERS

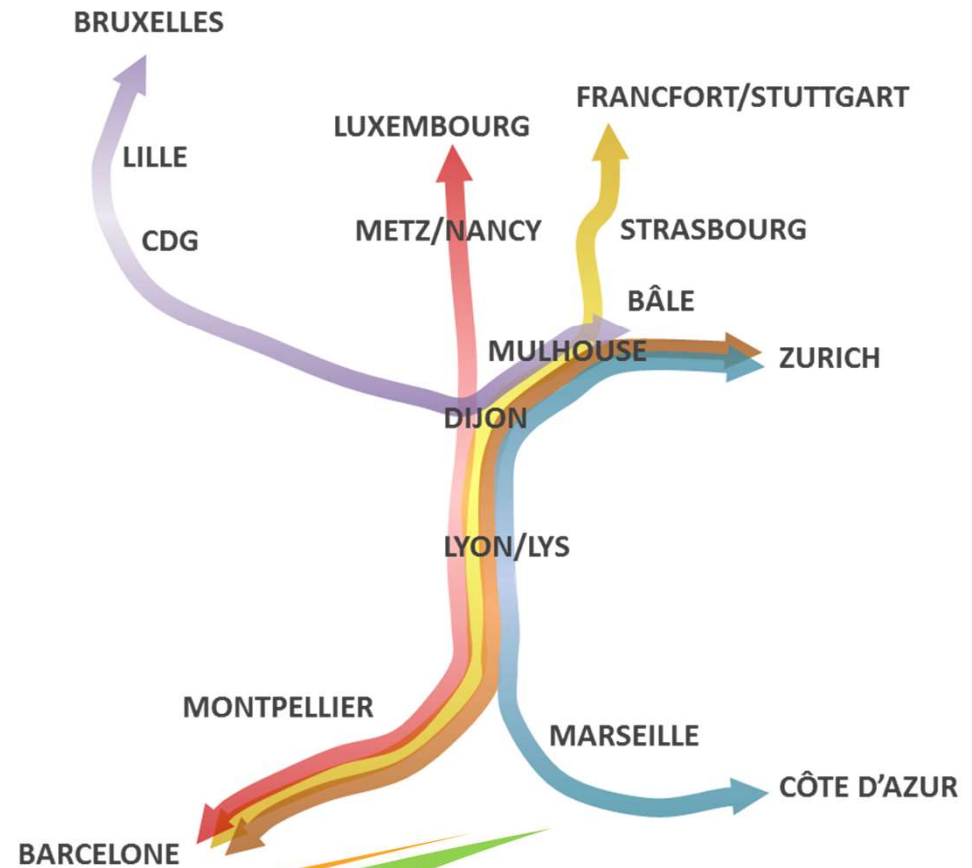


# REALIGNING WITH ACTUAL TRANSPORT FLOWS

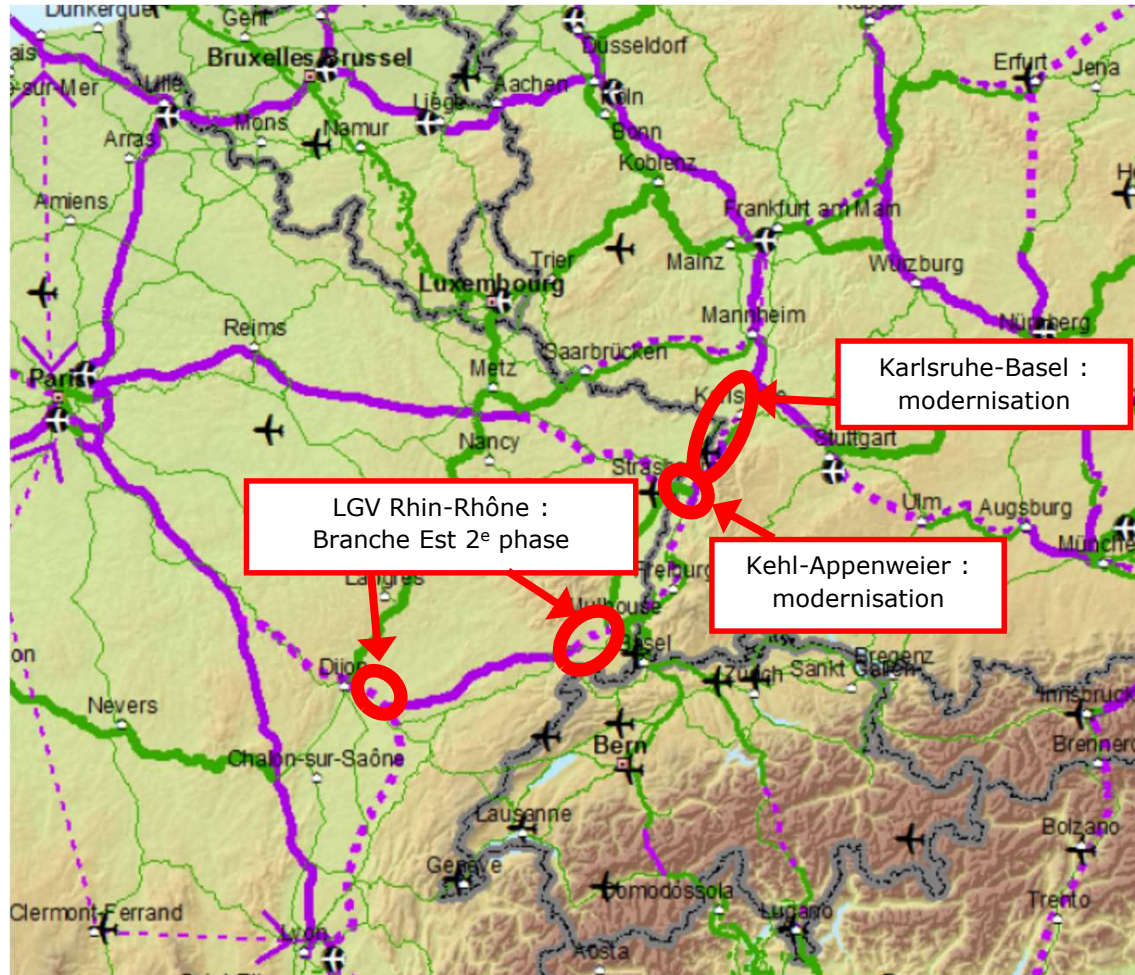
Current national/international service offer



Original planned international service offer



# REPOSITIONING PROJECTS OF COMMON INTEREST



# THE RHINE-RHÔNE HSL ASSOCIATION

## *ASSOCIATION TRANS EUROPE TGV RHIN-RHÔNE-MÉDITERRANÉE*

### **Current members:**

2 **regions** (Grand Est, Bourgogne-Franche-Comté)

7 **city authorities** (Strasbourg, Mulhouse, Epinal, Belfort, Montbéliard, Besançon, Dijon)

2 **towns** (Blotzheim, Chenôve)

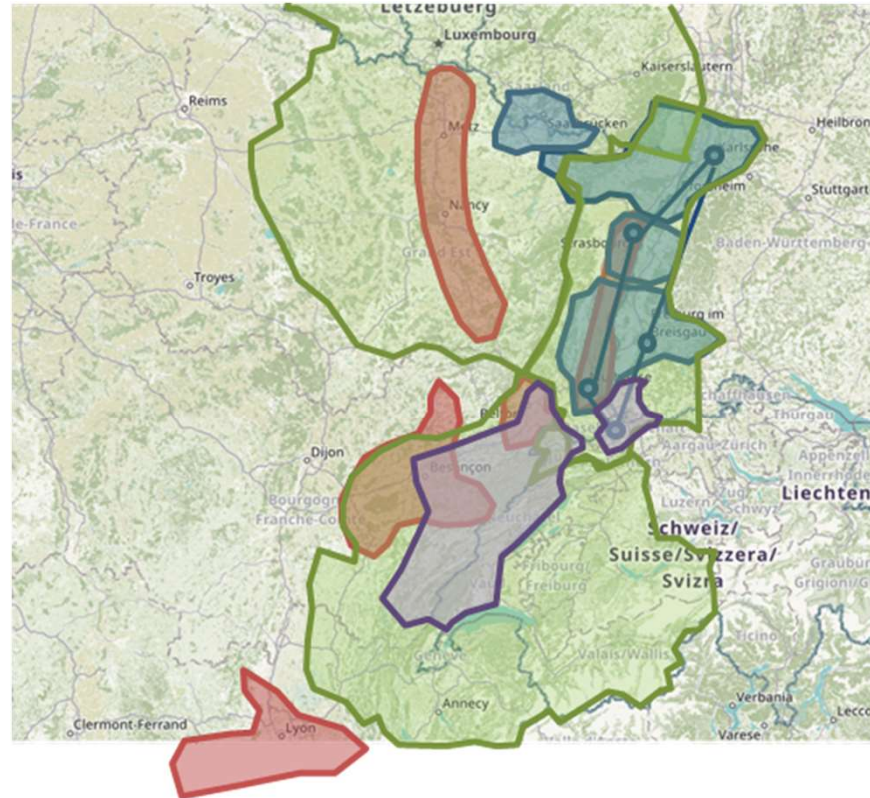
9 **Swiss territorial authorities** (Cantons - Basel-Stadt, Bern, Neuchâtel, Solothurn, Vaud; Cities/towns - Zürich, Lausanne, Delémont, Porrentruy)

5 **German territorial authorities** (Länder - Baden-Württemberg, Rheinland-Pfalz; Cities - Stuttgart, Freiburg-im-Breisgau, Karlsruhe)

3 **business networks** (CCI Alsace Eurométropole, CCI Bourgogne-Franche-Comté, MEDEF Bourgogne-Franche-Comté)



# OTHER COOPERATIVE MODELS FOR GOVERNANCE



-  Metropolitan Poles
-  Interreg Programmes
-  EGTCs
-  Others

