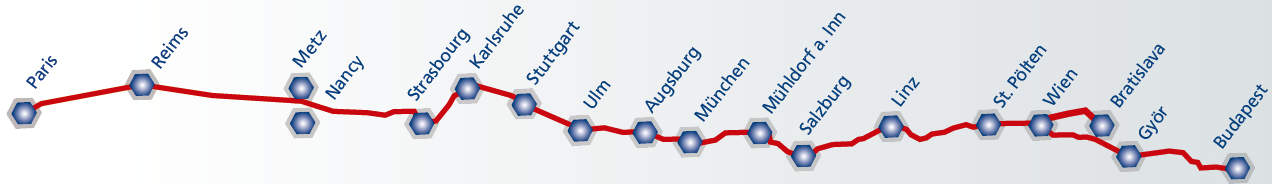


MAIN LINE FOR EUROPE



Initiative „Main Line for Europe“

Rhine-Alpine Talks #10

Annika Hummel | Managing Director „Main Line for Europe“



MAIN LINE FOR EUROPE



Who are we?

The “Main Line for Europe” initiative is a transnational alliance for rail infrastructure development along the Paris - Budapest/Bratislava development axis





Where do we come from?

- **Founding:** reaction to considerations of DE and FR to link their high-speed network
→ Paris via Saarbrücken and Mannheim
- **Consequence:** Karlsruhe and Strasbourg would not have been connected → economic/social consequences would be visible until now
- **Start of german-french lobbying** for an expansion of the lien Paris-Strasbourg-southwest Germany
- **First political success:** Treaty of "La Rochelle"
- **Other cities, regions and chambers of commerce** along the "Magistrale for Europe" quickly recognized the added value of joint lobbying and joined the initiative.



MAIN LINE FOR EUROPE



Cooperation and membership

- 24 members from 3 countries: Cities, Regions, Chambers of commerce
- Since 2021: Federal State of Salzburg
- Office is located at the City of Karlsruhe
- Only two membership categories: full membership and associated partners
- Full funding through membership fees

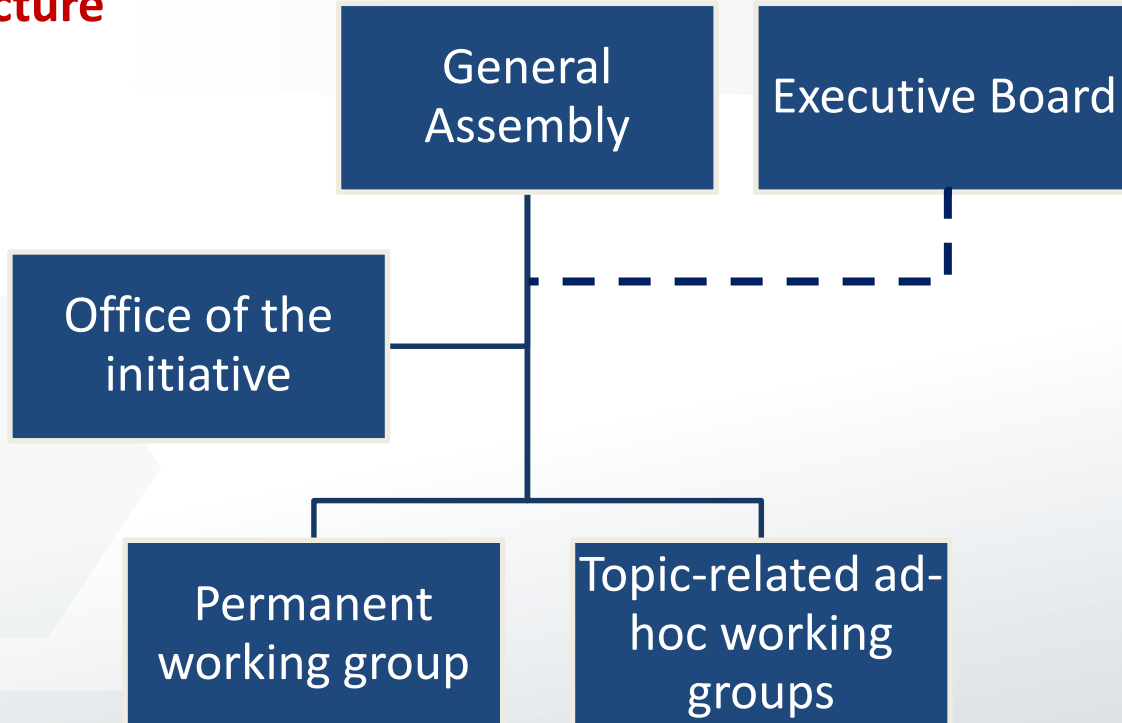




MAIN LINE FOR EUROPE



Our structure





MAIN LINE FOR EUROPE



Strategic fields of action

New strategy:
Main Line
2030 +





MAIN LINE FOR EUROPE



What is the added value of developing the axis?



- Demand for environmentally friendly travel increases
- Regions & industry recognize the added value of the “Main Line for Europe”

**Economic benefit:
720 million euros**



Lessons learned

- **Covid-19**: Personal contact vs. long travel distances → 50 % online / 50 % offline
- **Euroscepticism**: Recruiting members in europe-critical states is challenging → cooperation in smaller projects
- **Membership**: Only two categories: full membership and associated partners → 3rd category for “associated members”?
- **Organsiation structure**: Tight budgets at the municipalities require a lean organizational structure → decision for founding an registered association instead of EGTC

MAIN LINE FOR EUROPE



Thank you for your attention 

Contact:

Annika Hummel

Email: annika.hummel@magistrale.org

Phone: +49 721 133-1873