



European Grouping for Territorial Cooperation

Join the Interregional Alliance for the
Rhine-Alpine Corridor EGTC

How to become a member

Interregional
Alliance
for the

**Rhine-
Alpine
Corridor**

EGTC

1. From a project consortium to permanent cooperation

The INTERREG IVB NWE Project „CODE24 – Corridor Development Rotterdam-Genoa“ (2010-2015) aimed at a joint integrated approach towards the future development of the TEN-T core network corridor Rhine-Alpine and intended the interconnection of economic development, spatial, transport and ecological planning and thus, addressing urgent conflicts of capacity, sustainability and quality of life along the corridor. After five years, the CODE24 project partners presented a common strategy for the future development of the Rhine-Alpine Corridor, the main transport corridor of Europe.

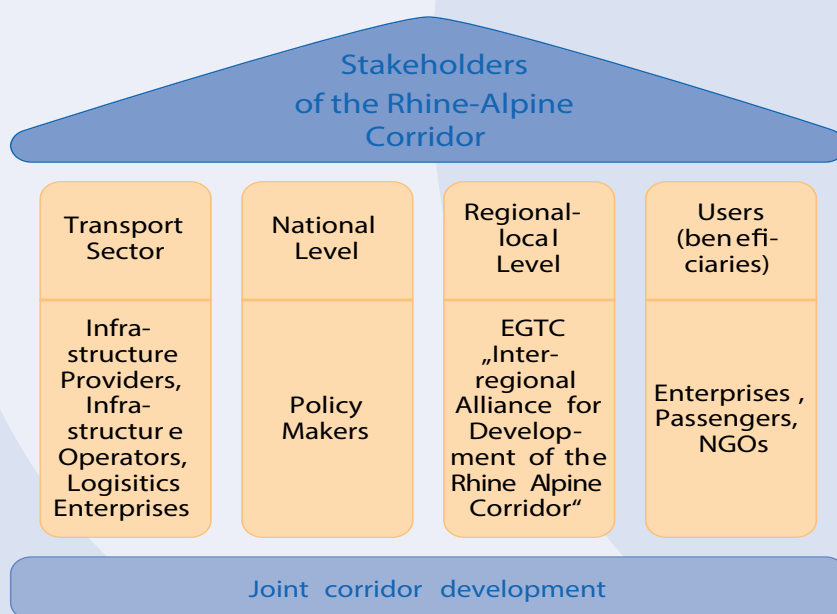
The European Grouping of Territorial Cooperation, „Interregional Alliance for the Rhine-Alpine Corridor EGTC“ shall continue the strategic initiative of CODE24 for the securing of a long-term partnership and cooperation beyond the limited INTERREG project period. In order to facilitate transnational cooperation between the partners along the axis and to manage the complex challenges of this corridor development, the „Interregional Alliance for the Rhine-Alpine Corridor EGTC“ was established in 2015. The common strategy for the development of the Rhine-Alpine Corridor as presented by the CODE24 partners provides the outlook for the future tasks of the EGTC.

Since the Rhine-Alpine Corridor can be looked upon as a spatially coherent axis with a multitude of common interests and interrelations between its single regional areas, there is a wide marge de manoeuvre for cooperation. A European Grouping for Territorial



Cooperation (EGTC) has been chosen as the appropriate form to join forces and to speak with one voice for its members. Thus, this EGTC representing the local and regional level should be considered the elemental stakeholder contributing to the joint development of the Rhine-Alpine Corridor as part

of the Trans European Network. The cooperation between the partners within the Corridor is therefore a meaningful approach for jointly tackling future challenges and developing the Corridor for the sake of its inhabitants.



2. Who we are

The Interregional Alliance for the Rhine-Alpine Corridor EGTC was officially founded on 24. April 2015 at the first Assembly in Mannheim.

The members of the EGTC as of 2015 are (from North to South):

- ▶ Port of Rotterdam Authority
- ▶ Provincie Gelderland
- ▶ Duisburger Hafen AG
- ▶ Regionalverband FrankfurtRheinMain
- ▶ Verband Region Rhein-Neckar
- ▶ Stadt Mannheim
- ▶ Regionalverband Mittlerer Oberrhein
- ▶ TechnologieRegion Karlsruhe GbR
- ▶ Stadt Karlsruhe
- ▶ Stadt Lahr
- ▶ Regionalverband Südlicher Oberrhein
- ▶ Regione Piemonte
- ▶ Uniontrasporti

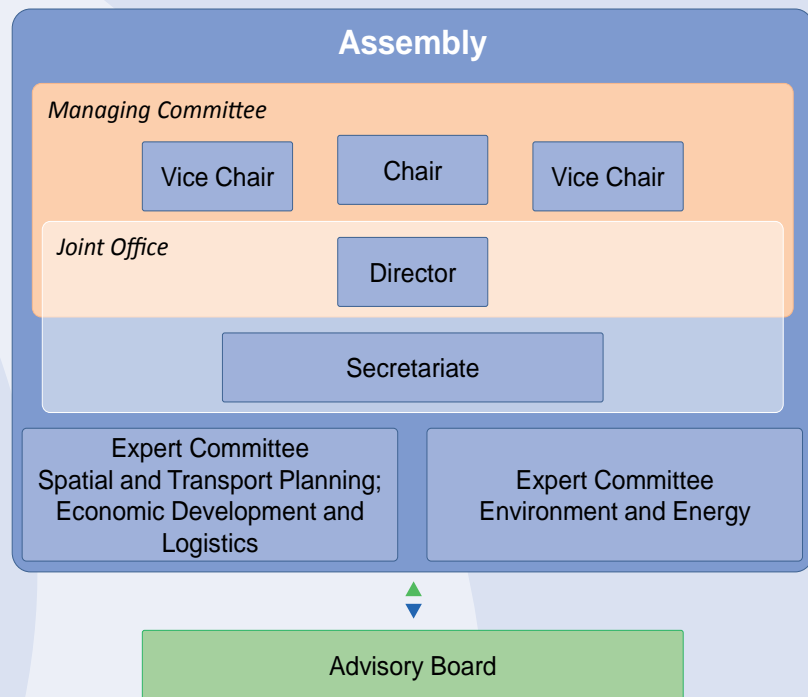
Following three new members were accepted to join the EGTC at the 2nd Assembly meeting on 9 November 2015:

- ▶ Kanton Basel-Stadt
- ▶ Port of Antwerp
- ▶ Stadt Mainz



The Assembly consisting of all current member organisations elected a Chair as well as two Vice Chairs for the first election period until 2018. Vice governor of the Province of Gelderland (NL), Conny Bieze was elected as the Chair. The Vice Chairs elected are the Deputy Director of the Regionalverband FrankfurtRheinMain (DE), Birgit Simon and NN (IT). The Chairs represent the EGTC in relations with third parties.

The Assembly appointed Jörg Saalbach from the Verband Region Rhein-Neckar as a Director of the EGTC. The Director is responsible for daily management of the activities of the EGTC, supported by the Secretariat which lead is also under his responsibility.



The Assembly adopted the Convention and the Statutes, legal documents governing the aims and the structure of the EGTC.

The EGTC is financed through annual fees of its members. The Assembly decides about the amount of the fee.

3. Objectives and Tasks

The main objective of the EGTC is to facilitate and promote the territorial cooperation among its members and to jointly strengthen and coordinate the territorial and integrated development of the multimodal Rhine-Alpine Corridor from the regional and local perspective.

The objectives and tasks of the EGTC as agreed by the founding members are:

- ▶ Combining and focusing the joint interests of its members towards national, European and infrastructure institutions
- ▶ Organisation and implementation of joint lobbying activities for the development of the Rhine-Alpine Corridor from a bottom up perspective
- ▶ Representation of the EGTC members in the EU Rhine-Alpine Corridor Forum
- ▶ Evolution of the joint development strategy for the multimodal Rhine-Alpine Corridor
- ▶ Coordination of regional development in the Rhine-Alpine Corridor, taking into account local and regional perspectives
- ▶ Consideration of transport infrastructure projects and land use conflicts along the Rhine-Alpine Corridor
- ▶ Directing funds to corridor related activities and projects
- ▶ Information to EGTC-members about funding opportunities for corridor related projects
- ▶ Application of EU-funded new projects (EGTC's are directly eligible for EU-funding) and joint management of EU-funds
- ▶ Providing a central platform for mutual information, exchange of experience and encounter
- ▶ Organisation of meetings of members
- ▶ Ensuring information transfer
- ▶ Taking charge of the Corridor Information System, developed within the project CODE24
- ▶ Improving the visibility and promotion of the Corridor
- ▶ Organisation of corridor events (congresses, workshops, etc.)
- ▶ Elaboration and distribution of publications (newsletters, leaflets, brochures)
- ▶ Taking over and maintaining the Mobile Exhibition developed within the project CODE24

What is an EGTC?

The European Grouping of Territorial Cooperation (EGTC) is a new EU-wide legal instrument for cross-border, transnational and interregional cooperation. It aims at facilitating cooperation and promoting the economic, social and territorial cohesion within the EU.

The legal basis of an EGTC is the Regulation (EC) No 1082/2006, amended by Regulation (EU) No 1302/2013 which is directly applicable in all member states. Since 2007 it has thus been possible for local and regional authorities from at least two Member States

to set up EGTC's. Such groupings possess their own legal personality. Successful examples of such cooperation may, for example, be the joint development of an area or the implementation of a project co-financed by the EU.



gives the regions more weight/voice in a bottom-up approach

What Advantages offers an EGTC?

An EGTC offers significant effects and concrete advantages for its members. Since the Rhine-Alpine Corridor can be looked upon as a spatially coherent axis with a multitude of common interests and interrelations between its single regional areas, there is a wide scope for cooperation.

The most relevant advantages of an EGTC are:

- ▶ It can operate as an administration unit with own legal personality
- ▶ It can independently carry out projects as a legally responsible corporate body
- ▶ It provides an organizational model for a long-term cooperation
- ▶ It facilitates and promotes territorial cooperation
- ▶ It guarantees the saving of a sustainable partnership once a project lifetime has come to an end
- ▶ It is an appropriate instrument for applying for EU-funds
- ▶ It has a strong voice and speaks for its members
- ▶ It provides enhanced visibility of the Corridor in regions, countries and at European level
- ▶ It offers the possibility of a strong placement in the public space and an establishing of political contact.

All in all the implementation of an EGTC is an appropriate legal form for interregional cooperation. In comparison between an EGTC and other national legal forms for cooperation (e.g. an association) or informal cooperation structures without a legal form (e.g. a convention), have the disadvantage of a lack of political, financial and organizational opportunities.

4. Become a member and join the EGTC

The more members we have the stronger we are! Bring in your regional and local matters and contribute to the joint development of the Rhine-Alpine Corridor!

The beneficial effects of joining the EGTC are:

Join us!



- ▶ Use potential of the Rhine-Alpine Corridor linked to territorial and major infrastructure planning
- ▶ Be part of joint efforts to the future development of the Corridor
- ▶ Jointly promote and lobby the interests of the Corridor
- ▶ Easier access to new EU-funds and new projects
- ▶ Take part in intercultural exchange between the regions and countries of the Corridor
- ▶ Being part of developing a common identity for the Corridor
- ▶ Use of the chance of contacts between different stakeholders
- ▶ Capitalise on the results of the project CODE24
- ▶ Opportunity to contribute to policy and position papers on Corridor topics
- ▶ Prevention to miss opportunities and hidden new global trends
- ▶ Benefit from transnational transport infrastructure
- ▶ Being stakeholder of economic interests within the Corridor development activities
- ▶ Ensure consideration of the viewpoints of entrepreneurs and enterprises
- ▶ Exchange of best practices concerning citizen involvement and awareness rising
- ▶ Exploration and dissemination of opportunities for economic development
- ▶ Promote transport related issues
- ▶ Save-guard their market share
- ▶ Ensure information of strategies, plans and projects of public and private stakeholders
- ▶ Provide for the smooth implementation of own projects
- ▶ Participate in a platform providing scientific and structured knowledge exchange
- ▶ Chance to contact local and regional public authorities
- ▶ Facilitate inter-institutional cooperation in research, education and exchange-programmes of staff and students
- ▶ Participate in developments to create excellence in the Corridor.

5. How to become a Member of the EGTC

Further members situated in the Corridor area can join the EGTC upon application with approval of the Assembly. The EGTC appeals to cities, regions and other territorial authorities, public equivalent bodies (e.g. ports, infrastructure providers) along the Rhine-Alpine Corridor to join the EGTC!

Potential members will be guided through the approval procedure by the EGTC. Every potential member of an EGTC needs formal approval given by the competent national authority. A potential member organization signs a declaration of intent to join the EGTC and submits it together with

the Convention and the Statutes of the EGTC to its national authority responsible for approving EGTCs. A template declaration of interest as well as the Convention and the Statutes will be provided to the potential new member by the EGTC.



Template Declaration of Interest

Dear Sir or Madam,

I herewith declare the interest of becoming a member of the European Grouping of Territorial Cooperation Interregional Alliance for the Rhine-Alpine Corridor.

This declaration is based on the decision of(competent body of your organisation) from ...(date).

The decision is noted in the attached document (for example excerpt of minutes of a board meeting).

The decision has been taken by being aware of the Convention and the Statutes of the European Grouping of Territorial Cooperation Interregional Alliance for the Rhine-Alpine Corridor.

Contact

If you are interested in becoming a member of the EGTC or if you need more information, please contact:

Interregional Alliance for the Rhine-Alpine Corridor EGTC
Verband Region Rhein-Neckar
Jörg Saalbach
P7, 20/21, 68161 Mannheim

Tel. +49 (0)- 621 10708-43
joerg.saalbach@egtc-rhine-alpine.eu
www.egtc-rhine-alpine.eu



Interregional
Alliance
for the
**Rhine-
Alpine
Corridor**
EGTC